

# DATA SHEET

 Version: 1  
 Revision date: 29/05/2025

 Tlf: +34 983 54 85 63  
[info@canvaxbiotech.com](mailto:info@canvaxbiotech.com)
[www.canvaxbiotech.com](http://www.canvaxbiotech.com)

## 1. Identification

<b>Product name</b>	<b>PriBLUE™ Prestained Protein Marker V (10–190 kDa)</b>
<b>Cat. No</b>	250 µL PL0035

## 2. Description

PriBLUE™ Prestained Protein Marker V is composed of ten proteins, ranging from 10 kDa to 190 kDa, each covalently bonded to distinct dyes for improved tracking during electrophoresis and membrane transfer. The marker includes a **70 kDa band coupled to orange dye**, a **20 kDa band coupled to green dye**, and **eight additional bands coupled to blue dye**, ensuring clear differentiation of molecular weights.

Designed for precise molecular weight estimation, this marker allows for **accurate visualization of protein separation and transfer efficiency on membranes**. Its distinct color coding facilitates the identification of specific bands, making it an essential tool for electrophoresis-based protein analysis.

## 3. Specifications

**MW Range:** 10–190 kDa  
**Format:** Ready-to-use, no heating required  
**Storage Buffer:** 100 mM Tris-HCl (pH 6.8); 5 mM EDTA; 10 mM DTT; 10% glycerol and 1% SDS.

## 4. Applications

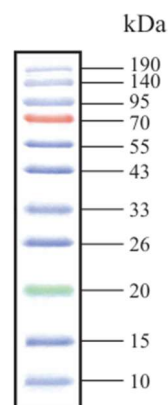
Protein molecular weight estimation in **electrophoresis and Western blot assays**.

## 5. Usage Instructions

- **Thoroughly mix before use** to maintain **uniform protein distribution**.
- **Recommended loading volumes:**  
     **5 µL per well** for **mini gels**  
     **10 µL per well** for **larger gels**
- **Electrophoresis & Transfer Conditions:**  
     **Electrophoresis:** 200 V for **50 minutes**  
     **Membrane transfer:** 200 mA for **3 hours**

## 6. Additional information

Band (kDa)	Color	Concentration
10	Prestained blue	2 µg/5 µL
20	Prestained green	2 µg/5 µL
30	Prestained blue	0.5 µg/5 µL
40	Prestained blue	0.5 µg/5 µL
50	Prestained blue	0.5 µg/5 µL
60	Prestained blue	0.5 µg/5 µL
70	Prestained orange	2 µg/5 µL
100	Prestained blue	0.5 µg/5 µL
150	Prestained blue	0.5 µg/5 µL
190	Prestained blue	0.5 µg/5 µL



15% Tris-glycine SDS gel (5 µL/well)



## DATA SHEET

Version: 1  
Revision date: 29/05/2025

Tlf: +34 983 54 85 63  
[info@canvaxbiotech.com](mailto:info@canvaxbiotech.com)

[www.canvaxbiotech.com](http://www.canvaxbiotech.com)

### 7. Further information

**Product Use Limitation** This product is developed, designed and sold exclusively only for research purposes use. The product was not tested for use in diagnostics or for drug development, nor is it suitable for administration to humans or animals.

**Disclaimer** The information provided in this Data Sheet is correct to the best of our knowledge and belief at the date of publication. This information is intended only as a guide and should not be taken as a warranty or quality specification. Canvax Reagents S.L.U. shall not be held liable for any damage resulting from handling or from contact with the above product.

